

## KRATKI LEO 200 LP

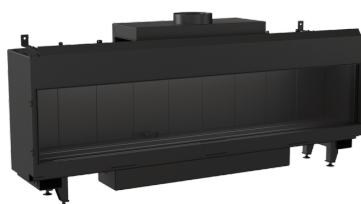


The Kratki Leo 200 LP is modern and luxurious closed combustion gas fireplace with a very impressive 2-meter-wide glass face. This extra wide glass is also 3-sided and offers an amazing panoramic view of the flames. The coaxial flue pipe systems ensure that this gas fireplace is a sealed and safe system. The sleek design comes with a digital hand held remote and realistic ceramic logs.

**Categories:** [All fireplaces](#), [Built-in gas fireplaces](#), [Gas fireplaces](#)

**Tags:** [Closed-combustion](#), [Modern](#)

## PRODUCT GALLERY



## ADDITIONAL INFORMATION

|                               |                          |
|-------------------------------|--------------------------|
| <b>Weight</b>                 | 236 kg                   |
| <b>Dimensions</b>             | 208 × 48.1 × 89.7 cm     |
| <b>Colour</b>                 | Black                    |
| <b>Country of manufacture</b> | Poland                   |
| <b>Flue pipe diameter</b>     | 130/200mm                |
| <b>Fuel</b>                   | Gas                      |
| <b>Heat output</b>            | 14 kW                    |
| <b>Heating capacity</b>       | 160 – 350m <sup>3</sup>  |
| <b>Material</b>               | Steel                    |
| <b>Warranty</b>               | 2-year warranty          |
| <b>Combustion technology</b>  | Balanced flue gas system |
| <b>Flue exit</b>              | Top                      |
| <b>Remote control</b>         | Yes                      |

## PRODUCT DESCRIPTION

The Kratki gas fireplace range pairs sleek and contemporary design with the most modern technology in gas fireplace combustion. These specialised fireplaces are manufactured with thick, high quality steel and are designed to conform to strict EU standards and regulations. Most importantly, the balanced coaxial flue pipe design ensures user safety by creating a fully sealed and safe system.

Each unit boasts a sizeable glass window that provides a beautiful view of the gas flames once lit. For improved safety and performance, as well as an increased lifespan, the heat-resistant glass that Kratki uses is of the highest quality. The gas fireplaces also come with a set of premium, ceramic logs that are beautifully designed to create a more realistic 'wood fire' effect when burning.

With very impressive technical specifications, this gas fireplace is an excellent heating solution for anyone looking for a high-performance, modern, closed-combustion gas unit.

The gas system works on both radiant and natural convection and, because the Kratki gas units are battery powered, they do not require electricity. As an efficient, closed-combustion fireplace, the heat generated while

burning is released more effectively into the room for your comfort.

All the gas fireplaces in this range come with a dedicated LCD remote for easy control of the unit.

## NOTES

---

---

---

---

---

---

---