



## KRATKI ARKE 80

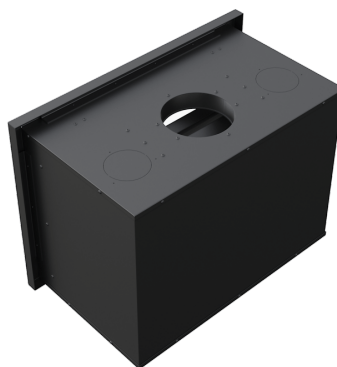
The Arke range is designed as an insert fireplace which allows for easy installation and reduced building work. The range comes standard with thermostatically controlled built-in fans in the base of the fireplace to distribute the heat more effectively. Kratki's heat intensifying ceramics line the inside of the fireplace chamber, greatly increasing the performance of the fireplace. This thick layer of ceramics that reflect the heat also helps to protect the fans underneath in the case of electrical load-shedding or power loss. This wood burning fireplace has a front slide out removable ash-box for easy cleaning.

---

**Categories:** [All fireplaces](#), [Bestselling wood inserts](#), [Built-in wood fireplaces](#), [Wood fireplaces](#)

**Tags:** [Arke range](#), [Closed-combustion](#), [Heat intensifying ceramics](#), [Modern](#)

## PRODUCT GALLERY





## ADDITIONAL INFORMATION

<b>Weight</b>	132 kg
<b>Dimensions</b>	85 × 47.1 × 61.8 cm
<b>Ash pan</b>	Yes
<b>CO emissions</b>	0.10%
<b>Combustion technology</b>	Primary and secondary combustion
<b>Colour</b>	Black
<b>Country of manufacture</b>	Poland
<b>Door</b>	Standard door
<b>Efficiency</b>	75%
<b>Fan system</b>	Yes: Forced convection
<b>Flue exit</b>	Top
<b>Flue pipe diameter</b>	200mm
<b>Fuel</b>	Wood
<b>Heat output</b>	16 kW
<b>Heating capacity</b>	190 – 400m <sup>3</sup>
<b>Material</b>	Steel
<b>Warranty</b>	5-year warranty

## PRODUCT DESCRIPTION

The Kratki insert fireplaces pair sleek and contemporary design with the most modern technology in fireplace combustion. With very impressive technical specifications, this closed-combustion fireplace is an excellent heating solution for anyone looking for a high-performance, modern, built-in unit. Designed as insert fireplace, this firebox is easy to install and requires reduced building work.

Considering that these fireplaces are built to last Poland's harsh winters, Kratki's built-in Arke range is manufactured with thick, high-quality steel – which is reflected in the solid weight of each insert fireplace.

The Arkes boast a sizeable glass window, providing a beautiful view of the flames once the fire has been lit. For

improved safety and performance, as well as to increase their lifespan, the heat-resistant glass that Kratki uses is of the highest quality. Thanks to the specialised, air-wash glass cleaning system, the soot deposits on the fireplace glass are greatly reduced. In addition, the units come with a removable ash box for simple and easy cleaning.

The burn chambers of the Arke units are lined with Kratki's signature ceramics. When it comes to the choice of materials that can be used inside a fireplace chamber, these thick, heat-intensifying ceramics offer the best thermal properties available.

The Arkes come standard with thermostatically-controlled, built-in fans in their base. Most importantly, these fans distribute the heat around your space more effectively. The electrical load-shedding in South Africa can cause problems with the fans of most fireplace brands. Because the power cut turns the fans off during operation, the heat inside the chamber can transfer through the metal base of the fireplace and damage or burn-out the fans below. Fortunately, the bases of all the Kratki Arke fireplaces have a thick layer of specialised ceramics that deflect the heat and protect the fans in the case of a power outage.

The Arke range provides primary and secondary combustion. By utilising both forced convection and radiant heating technology, these units offer a cleaner burn and the maximum heat output. As an efficient, closed-combustion fireplace, most of the heat generated by the burning wood is released more effectively into the room for your comfort.

The Kratki Arke range comes with a 5-year warranty on the structure of the fireplace (and 2 year warranty for the Arke fan system). As a result, you can be confident that your fireplace has been designed with strength and durability at its very core and will last for many years to come.

## NOTES

---

---

---

---

---

---

---